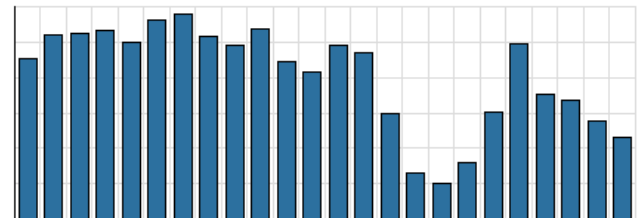


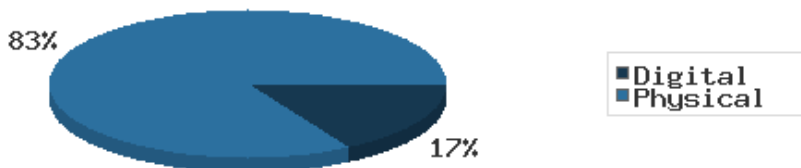
Monthly Stats Brief Narrative

Through December 2020, the number of patrons entering our buildings greatly decreased system-wide compared to this same time year-to-date the previous year. Combined physical and digital use of library materials greatly decreased year-to-date compared to 2019. About 4% of our registered cardholders checked out a physical item this past month, while about 2% of registered cardholders checked out a digital item.

District Total Checkouts Over 24 Months



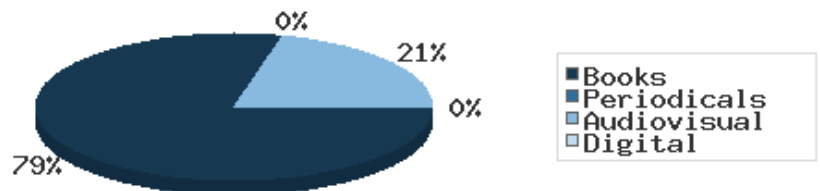
Digital vs. Physical Circulation YTD



Digital usage has comprised about 32% of total materials use year-to-date through December 2020, and digital usage slightly increased from this time in 2019.

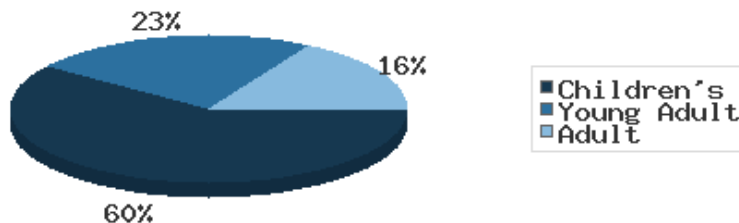
In 2020 BDL spent \$31,708.66 on digital resources and \$108,110.33 on print and audiovisual materials.

Year-to-Date Materials Expenditures



In December 2020, BDL patrons saved \$50,080.19 by checking out 4,691 physical items from the library. Our programming for all ages and our digital services further increase the library's value to the community, bringing the total estimated value to \$66,380.78.

Programs Offered in 2020 YTD



Compared to this time year-to-date 2019, the number of programs BDL offered has greatly decreased. Attendance at programs greatly increased over this same period.

The library remains closed to the public and is providing curbside service only.

There were a total of 1075 visits to the library for curbside.

See the full statistical report, starting on the next page, for details and more graphs. The most up-to-date stats are always available online and interactive at <https://www.BranchDistrictLibrary.org/stats>.

Attendance

December 2020

	BDL Monthly Total	BDL YTD	BDL Year End (Year-over-Year Change)				
			2019	2018	2017	2016	2015
Attendance	0	60,106 (-65%)	169,795 (-12%)	191,866 (-1%)	193,922 (-4%)	200,991 (+3%)	195,735 (+17%)
Hours Open	0.00	7,132.50 (-37%)	11,250.25 (-9%)	12,312.00 (+13%)	10,869.15 (-0%)	10,877.50 (+25%)	8,703.00 (+61%)
Number of Hours Scheduled Open Each Week (Tracking Since 1/2018)	237.00		241.00 (-2%)	245.00	0.00	0.00	0.00

Patrons

December 2020

	BDL Monthly Total	BDL YTD	BDL Year End (Year-over-Year Change)				
			2019	2018	2017	2016	2015
Population in our Service Area (Tracking Since 2018)	44,935	44,931 (avg) (-0%)	44,926 (avg)	44,926 (avg)	0 (avg)	0 (avg)	0 (avg)
Library Card Holders	22,037	21,365 (avg) (+4%)	20,773 (avg) (+3%)	20,166 (avg) (-21%)	25,685 (avg) (+3%)	24,899 (avg) (+4%)	23,974 (avg) (+5%)
Patrons Who Checked Out a Physical Item	836	1,102 (avg) (-48%)	1,890 (avg) (-0%)	1,896 (avg) (+0%)	1,887 (avg) (-7%)	2,030 (avg) (-2%)	2,069 (avg) (-2%)
New Library Card Holders Added	11	1,304 (+111%)	618 (-39%)	1,021 (+21%)	844 (-15%)	989 (-9%)	1,086 (-22%)
In-House Holds Filled for Our Library Card Holders	1,712	9,467 (-10%)	10,527 (-4%)	10,987 (-6%)	11,650 (+12%)	10,407 (+2%)	10,225 (+7%)
Active Hoopla Users (Began 2016)	288	322 (avg) (+11%)	260 (avg) (-1%)	262 (avg) (+39%)	189 (avg) (+47%)	129 (avg)	0 (avg)
Active OverDrive Users	211	234 (avg) (+10%)	203 (avg) (+3%)	197 (avg) (+26%)	156 (avg) (+16%)	134 (avg) (-7%)	144 (avg) (+7%)

Physical Collection

Tracking Item-Type Breakdown Since 8/2017

December 2020

	BDL Monthly Total	BDL YTD	BDL Year End (Year-over-Year Change)				
			2019	2018	2017	2016	2015
Physical Books and All other Print Materials in the Catalog	91,278		98,689 (-2%)	100,253 (-0%)	100,293	0	0
Physical Audiobooks in the Catalog	1,949		1,783 (-5%)	1,881 (+2%)	1,852	0	0
Physical Video Materials in the Catalog	11,352		11,460 (+8%)	10,579 (+1%)	10,519	0	0
Physical Music Recordings in the Catalog	178		159 (-53%)	337 (-2%)	345	0	0
TOTAL Physical Items in the Catalog	105,257		112,053 (-1%)	113,050 (+0%)	113,009 (-11%)	126,407 (-4%)	131,432 (+1%)

Digital Collection

Tracking Since 8/2017

December 2020

	BDL Monthly Total	BDL YTD	BDL Year End (Year-over-Year Change)				
			2019	2018	2017	2016	2015
Ebooks in All Digital Collections	480,691		370,666 (+21%)	306,595 (+33%)	230,178	0	0
Audiobooks in All Digital Collections	128,892		86,004 (+19%)	71,995 (+36%)	52,833	0	0
Video Materials in All Digital Collections	17,791		16,267 (+14%)	14,229 (-10%)	15,767	0	0
Music Recordings in All Digital Collections	273,294		271,614 (+13%)	239,705 (-14%)	280,259	0	0
Periodicals in All Digital Collections	3,668		0	0	0	0	0
TOTAL of All Digital Collections	904,336		744,551 (+18%)	632,524 (+9%)	579,037	0	0

Total Collection

Tracking Since 8/2017

December 2020

	BDL Monthly Total	BDL YTD	BDL Year End (Year-over-Year Change)				
			2019	2018	2017	2016	2015
Combined Physical Items	105,257		112,053 (-1%)	113,050 (+0%)	113,009 (-11%)	126,407 (-4%)	131,432 (+1%)
Combined Digital Collections	904,336		744,551 (+18%)	632,524 (+9%)	579,037	0	0
TOTAL of all Collections	1,009,593		856,604 (+15%)	745,574 (+8%)	692,046 (+447%)	126,407 (-4%)	131,432 (+1%)

Use of Physical Items

December 2020

	BDL Monthly Total	BDL YTD	BDL Year End (Year-over-Year Change)				
			2019	2018	2017	2016	2015
Checkouts of Cataloged Items	2,966	52,227 (-53%)	110,285 (-3%)	113,128 (-6%)	120,916 (+2%)	118,595 (-3%)	121,841 (-1%)
Renewals of Cataloged Items	648	7,181 (-47%)	13,490 (-1%)	13,607 (-8%)	14,804 (-4%)	15,480 (+0%)	15,434 (-4%)
Items Used in the Library But Not Checked Out	66	6,404 (+54%)	4,166 (+49%)	2,803 (-8%)	3,050 (+126%)	1,351 (+7,011%)	19 (-68%)
Checkouts of Uncataloged Items	68	1,001 (-70%)	3,294 (-16%)	3,904 (+38%)	2,839 (-38%)	4,578 (+4%)	4,385 (-5%)
Requests from BDL Patrons for Items at Other MeLCat Libraries, Actually Fulfilled	576	4,599 (-53%)	9,873 (+1%)	9,777 (+20%)	8,169 (+15%)	7,112 (+16%)	6,118 (+8%)
Requests from Other MeLCat Libraries for Items at BDL, Actually Fulfilled	367	3,175 (-58%)	7,582 (-23%)	9,810 (+25%)	7,867 (+11%)	7,068 (+46%)	4,855 (-10%)
TOTAL Use of Physical Items	4,691	74,587 (-50%)	148,690 (-3%)	153,029 (-3%)	157,645 (+2%)	154,184 (+1%)	152,652 (-1%)

Use of Digital Resources

December 2020

	BDL Monthly Total	BDL YTD	BDL Year End (Year-over-Year Change)				
			2019	2018	2017	2016	2015
OverDrive Checkouts	969	13,051 (+21%)	10,822 (+14%)	9,501 (+21%)	7,823 (+4%)	7,502 (+2%)	7,380 (+12%)
Hoopla Checkouts (Began 2016)	1,008	13,604 (+9%)	12,530 (-2%)	12,796 (+20%)	10,669 (+96%)	5,432	0
RB Digital Circulations (Began 2020)	157	1,066	0	0	0	0	0
All Other Digital Services	134	7,140 (-33%)	10,604 (+11%)	9,572 (-72%)	34,047 (-46%)	62,788 (+38%)	45,565 (+203%)
TOTAL Use of Digital Resources	2,268	34,861 (+3%)	33,956 (+7%)	31,869 (-39%)	52,539 (-31%)	75,722 (+43%)	52,945 (+145%)

Total Item Usage

December 2020

	BDL Monthly Total	BDL YTD	BDL Year End (Year-over-Year Change)				
			2019	2018	2017	2016	2015
Combined Checkouts of Physical Items	4,691	74,587 (-50%)	148,690 (-3%)	153,029 (-3%)	157,645 (+2%)	154,184 (+1%)	152,652 (-1%)
Combined Use of Digital Resources	2,268	34,861 (+3%)	33,956 (+7%)	31,869 (-39%)	52,539 (-31%)	75,722 (+43%)	52,945 (+145%)
TOTAL Uses of All BDL Items	6,959	109,448 (-40%)	182,646 (-1%)	184,898 (-1.2%)	210,184 (-9%)	229,906 (+1.2%)	205,597 (+16%)

Cataloging

December 2020

	BDL Monthly Total	BDL YTD	BDL Year End (Year-over-Year Change)				
			2019	2018	2017	2016	2015
Physical Items Added to the Catalog	623	9,938 (+2%)	9,719 (-12%)	11,056 (+0%)	11,009 (-1%)	11,091 (+29%)	8,582 (+40%)
Physical Items Deleted from the Catalog	910	17,003 (+58%)	10,769 (-2%)	10,941 (-55%)	24,366 (+53%)	15,968 (+84%)	8,668 (+40%)

Reference Questions

December 2020

	BDL Monthly Total	BDL YTD	BDL Year End (Year-over-Year Change)				
			2019	2018	2017	2016	2015
General Reference Questions in Person	201	4,347 (-50%)	8,748 (+32%)	6,641 (-12%)	7,537 (+20%)	6,285 (+124%)	2,806 (-0%)
Questions via Telephone Calls	778	4,559 (+11%)	4,111 (+6%)	3,866 (-24%)	5,079 (+10%)	4,622 (+60%)	2,885 (+0%)
Reference Questions Delivered Online	45	243 (-14%)	281 (+85%)	152 (-35%)	233 (-23%)	304 (+34%)	227 (+77%)
In-Person Questions on Computer or Internet Use	17	2,767 (-63%)	7,505 (+6%)	7,068 (-3%)	7,285 (+11%)	6,568 (+18%)	5,551 (+36%)
In-Person Questions about Our Online Databases	7	107 (-69%)	349 (-15%)	409 (+13%)	363 (+114%)	170 (+85%)	92 (-24%)
In-Person Tax Form Questions	0	286 (-12%)	326 (-37%)	518 (+5%)	493 (+4%)	473 (-18%)	579 (+3%)
TOTAL of All Reference Questions	1,048	12,309 (-42%)	21,320 (+14%)	18,654 (-11%)	20,990 (+14%)	18,422 (+52%)	12,140 (+15%)

Notary Services

Began 9/2017 at Coldwater Only

December 2020

	BDL Monthly Total	BDL YTD	BDL Year End (Year-over-Year Change)				
			2019	2018	2017	2016	2015
Patrons Who Used our Free Notary Services	0	46 (-52%)	95 (+44%)	66 (+371%)	14	0	0
Documents Notarized	0	54 (-56%)	124 (+85%)	67 (+253%)	19	0	0

MeLCat
December 2020

	BDL Monthly Total	BDL YTD	BDL Year End (Year-over-Year Change)				
			2019	2018	2017	2016	2015
Requests from BDL Patrons for Items at Other MeLCat Libraries	605	5,026 (-52%)	10,538 (+1%)	10,462 (+20%)	8,699 (+14%)	7,643 (+5%)	7,280 (+9%)
Requests from BDL Patrons for Items at Other MeLCat Libraries, Actually Fulfilled	576	4,599 (-53%)	9,873 (+1%)	9,777 (+20%)	8,169 (+15%)	7,112 (+16%)	6,118 (+8%)
Requests from Other MeLCat Libraries for Items at BDL	405	4,067 (-52%)	8,405 (-18%)	10,296 (+29%)	7,994 (+13%)	7,096 (+18%)	5,989 (-10%)
Requests from Other MeLCat Libraries for Items at BDL, Actually Fulfilled	367	3,175 (-58%)	7,582 (-23%)	9,810 (+25%)	7,867 (+11%)	7,068 (+46%)	4,855 (-10%)

Programs Held
December 2020

	BDL Monthly Total	BDL YTD	BDL Year End (Year-over-Year Change)				
			2019	2018	2017	2016	2015
Early Childhood Literacy Programs Held (Tracking since 2021)	0	0	0	0	0	0	0
Juvenile Programs Held	66	551 (-31%)	536 (-27%)	730 (+1%)	720 (+19%)	604 (+5%)	575 (+19%)
Young Adult Programs Held	13	138 (-55%)	264 (-22%)	338 (+41%)	239 (+47%)	163 (+8%)	151 (+20%)
Adult Programs Held	19	257 (+54%)	167 (+23%)	136 (-7%)	146 (-34%)	220 (+40%)	157 (+26%)
All-Ages Programs Held (Tracking since 2021)	0	0	0	0	0	0	0
Early Childhood Literacy Summer Reading Programs Held (Tracking since 2021)	0	0	0	0	0	0	0
Juvenile Summer Reading Events Held	0	0	93 (-18%)	114 (+20%)	95 (+7%)	89 (+6%)	84 (+8%)
Young Adult Summer Reading Events Held	0	0	53 (+8%)	49 (-14%)	57 (+97%)	29 (-66%)	85 (+183%)
Adult Summer Reading Events Held	0	0	17 (+467%)	3	0	3 (-40%)	5 (+25%)
All-Ages Summer Reading Programs Held (Tracking since 2021)	0	0	0	0	0	0	0
Computer Classes Held	0	1 (-99%)	81 (+305%)	20 (-9%)	22 (+57%)	14 (-36%)	22 (-8%)
TOTAL of All Programs	98	947 (-41%)	1,211 (-13%)	1,390 (+9%)	1,279 (+14%)	1,122 (+4%)	1,079 (+24%)

Program Attendance

December 2020

	BDL Monthly Total	BDL YTD	BDL Year End (Year-over-Year Change)				
			2019	2018	2017	2016	2015
Attendees at Early Childhood Literacy Programs (Tracking since 2021)	0	0	0	0	0	0	0
Attendees at Juvenile Programs	740	25,317 (+73%)	10,939 (-30%)	15,725 (+2%)	15,351 (+48%)	10,371 (+23%)	8,415 (+7%)
Attendees at Young Adult Programs	132	3,204 (+29%)	2,106 (-35%)	3,218 (-15%)	3,806 (+276%)	1,011 (+14%)	884 (+38%)
Attendees at Adult Programs	183	16,263 (+519%)	2,627 (+33%)	1,970 (-0%)	1,979 (-3%)	2,048 (-5%)	2,157 (+65%)
Attendees at All-Ages Programs (Tracking since 2021)	0	0	0	0	0	0	0
Attendees at Early Childhood Literacy Summer Reading Programs (Tracking since 2021)	0	0	0	0	0	0	0
Attendees at Juvenile Summer Reading Events	0	0	1,725 (-55%)	3,864 (+24%)	3,116 (-20%)	3,904 (+56%)	2,499 (-21%)
Attendees at Young Adult Summer Reading Events	0	0	251 (-25%)	333 (-50%)	671 (+127%)	295 (+14%)	259 (-16%)
Attendees at Adult Summer Reading Events	0	0	310 (+265%)	85	0	21 (-73%)	77 (-31%)
Attendees at All-Ages Summer Programs (Tracking since 2021)	0	0	0	0	0	0	0
Attendees at Computer Classes	0	0	26 (+30%)	20 (-5%)	21 (+75%)	12 (-59%)	29 (+4%)
TOTAL of All Program Attendance	1,055	44,784 (+82%)	17,984 (-29%)	25,215 (+1%)	24,944 (+41%)	17,662 (+23%)	14,320 (+7%)

Summer Reading Overview

December 2020

	BDL Monthly Total	BDL YTD	BDL Year End (Year-over-Year Change)				
			2019	2018	2017	2016	2015
Juveniles Signed Up for Summer Reading Program	0	91 (-87%)	345 (-54%)	747 (-35%)	1,153 (+19%)	967 (+13%)	859
Young Adults Signed up for Summer Reading Program	0	29 (-78%)	90 (-76%)	378 (-2%)	385 (+241%)	113 (-64%)	311
Adults Signed Up for Summer Reading Program	0	33 (-79%)	159 (-36%)	248 (+112%)	117 (+36%)	86 (+1%)	85
Juveniles who Completed Summer Reading Program	0	91 (-76%)	203 (-22%)	260 (-50%)	518 (+13%)	459 (-10%)	512
Young Adults who Completed Summer Reading Program	0	29 (-63%)	60 (-56%)	135 (-50%)	268 (+332%)	62 (-49%)	122
Adults who Completed Summer Reading Program	0	33 (-72%)	118 (-28%)	165 (+72%)	96 (+60%)	60 (+7%)	56
Juvenile Summer Reading Events Held	0	0	93 (-18%)	114 (+20%)	95 (+7%)	89 (+6%)	84 (+8%)
Young Adult Summer Reading Events Held	0	0	53 (+8%)	49 (-14%)	57 (+97%)	29 (-66%)	85 (+183%)
Adult Summer Reading Events Held	0	0	17 (+467%)	3	0	3 (-40%)	5 (+25%)
Attendees at Juvenile Summer Reading Events	0	0	1,725 (-55%)	3,864 (+24%)	3,116 (-20%)	3,904 (+56%)	2,499 (-21%)
Attendees at Young Adult Summer Reading Events	0	0	251 (-25%)	333 (-50%)	671 (+127%)	295 (+14%)	259 (-16%)
Attendees at Adult Summer Reading Events	0	0	310 (+265%)	85	0	21 (-73%)	77 (-31%)

Summer Reading Program Signups

December 2020

	BDL Monthly Total	BDL YTD	BDL Year End (Year-over-Year Change)				
			2019	2018	2017	2016	2015
Juveniles Signed Up for Summer Reading Program	0	91 (-87%)	345 (-54%)	747 (-35%)	1,153 (+19%)	967 (+13%)	859
Young Adults Signed up for Summer Reading Program	0	29 (-78%)	90 (-76%)	378 (-2%)	385 (+241%)	113 (-64%)	311
Adults Signed Up for Summer Reading Program	0	33 (-79%)	159 (-36%)	248 (+112%)	117 (+36%)	86 (+1%)	85
TOTAL Summer Reading Program Signups	0	153 (-85%)	594 (-57%)	1,373 (-17%)	1,655 (+42%)	1,166 (-7%)	1,255

Summer Reading Program Completions

December 2020

	BDL Monthly Total	BDL YTD	BDL Year End (Year-over-Year Change)				
			2019	2018	2017	2016	2015
Juveniles who Completed Summer Reading Program	0	91 (-76%)	203 (-22%)	260 (-50%)	518 (+13%)	459 (-10%)	512
Young Adults who Completed Summer Reading Program	0	29 (-63%)	60 (-56%)	135 (-50%)	268 (+332%)	62 (-49%)	122
Adults who Completed Summer Reading Program	0	33 (-72%)	118 (-28%)	165 (+72%)	96 (+60%)	60 (+7%)	56
TOTAL Summer Reading Program Completions	0	153 (-74%)	381 (-32%)	560 (-37%)	882 (+52%)	581 (-16%)	690

Library-Provided Computer Services

December 2020

	BDL Monthly Total	BDL YTD	BDL Year End (Year-over-Year Change)				
			2019	2018	2017	2016	2015
One-hour sessions on Library Wifi	22,937	284,892 (-40%)	474,750 (+2%)	465,219 (+9%)	425,714 (+4%)	410,437 (+17%)	351,423 (+18%)
Desktop, Laptop, and Tablet Computers Available for Public Use	88		88 (-1%)	89 (+22%)	73	73	73
Sessions on Library-Provided Computers	0	9,394 (-73%)	34,577 (-24%)	45,687 (+3%)	44,181 (+6%)	41,513 (-11%)	46,405 (+6%)
Hours Library-Provided Computers Used (Tracking Since 2018)	0.00	6,031.58 (-75%)	24,280.36 (-2%)	24,701.55	0.00	0.00	0.00
Desktop, Laptop, and Tablet Computers Available for Staff Use	52		52 (+4%)	50 (+22%)	41	41	41

Website Stats

December 2020

	BDL Monthly Total	BDL YTD	BDL Year End (Year-over-Year Change)				
			2019	2018	2017	2016	2015
Monthly Website Sessions	4,120	41,586 (-28%)	58,161 (+28%)	45,594 (-38%)	73,326 (-2%)	75,139 (+3%)	72,706 (+6%)
Monthly Website Page Views	8,583	92,094 (-29%)	129,778 (+9%)	118,634 (-33%)	177,799 (-2%)	182,084 (+7%)	169,630 (+4%)

Faxes, Prints, and Sales

December 2020

	BDL Monthly Total	BDL YTD	BDL Year End (Year-over-Year Change)				
			2019	2018	2017	2016	2015
Fax Pages Received	10	149 (-57%)	350 (-16%)	419 (+61%)	260 (+19%)	219 (+27%)	173 (+3%)
Fax Pages Sent	332	3,935 (-59%)	9,524 (+3%)	9,249 (+138%)	3,879 (+123%)	1,741 (-7%)	1,882 (+39%)
Free Prints for Job Seekers	40 ¹	1,091 (-61%)	2,796 (-23%)	3,631 (+16%)	3,128 (+9%)	2,878 (+23%)	2,335 (-23%)
Black and White Patron Prints (Tracking Since 6/2016)	1,118	33,177 (-56%)	75,818 (-6%)	81,016 (+7%)	75,606 (+113%)	35,561	0
Color Patron Prints (Tracking Since 6/2016)	380	4,709 (-58%)	11,299 (-8%)	12,285 (+20%)	10,253 (+154%)	4,036	0
Flash Drives Sold (Tracking Since 6/2016)	0	18 (-51%)	37 (-10%)	41 (-27%)	56 (+4%)	54	0
Earbuds Sold (Tracking Since 6/2016)	1	131 (-72%)	462 (-14%)	538 (+29%)	416 (+151%)	166	0

Notes

- Includes 10 free student prints at Bronson and 20 at Coldwater.

Fines and Fees

Overdue Fines Dropped in 2017

December 2020

	BDL Monthly Total	BDL YTD	BDL Year End (Year-over-Year Change)				
			2019	2018	2017	2016	2015
Fines and Fees Payments Received	\$ 80.00	\$ 1,717.01 (-44%)	\$ 3,092.62 (+28%)	\$ 2,412.73 (-68%)	\$ 7,628.31 (-24%)	\$ 10,062.96 (-30%)	\$ 14,448.76 (-3%)
Outstanding Fines and Fees	\$ 53,362.56		55,588.42 (-0%)	55,850.27 (-34%)	84,232.33 (-63%)	228,102.90 (+3%)	221,076.26 (+5%)

Debt Collections

Unique Management Services, Inc.
Tracking Since 2014

December 2020

	BDL Monthly Total	BDL YTD	BDL Year End (Year-over-Year Change)				
			2019	2018	2017	2016	2015
Fine Payments as a Result of Collection Agency's Efforts	\$ 0.00	\$ 0.00	\$ 268.00 (-94%)	\$ 4,183.45 (+1,727%)	\$ 229.00 (-76%)	\$ 947.13 (+16%)	\$ 818.48 (+1%)
Library Materials Returned as a Result of Collection Agency's Efforts	\$ 0.00	\$ 0.00	\$ 0.00	\$ 462.00 (-48%)	\$ 888.95 (-33%)	\$ 1,317.93 (-2%)	\$ 1,346.89 (-28%)
What We Paid Collection Agency for Their Services	\$ 0.00	\$ 0.00	\$ 134.10 (-75%)	\$ 528.66 (-5%)	\$ 558.08 (-45%)	\$ 1,022.23 (-3%)	\$ 1,051.42 (+40%)

Value to Our Service Area
 Visit <https://www.BranchDistrictLibrary.org/value>
 to learn how we determine these numbers.

December 2020

	BDL Monthly Total	BDL YTD	BDL Year End (Year-over-Year Change)				
			2019	2018	2017	2016	2015
Value from Physical Item Checkouts	\$ 50,080.19	\$ 822,979.52 (-53%)	\$ 1,755,554.08 (-7%)	\$ 1,888,907.75 (-12%)	\$ 2,135,671.28 (+0%)	\$ 2,132,387.79 (-2%)	\$ 2,167,140.68 (+0%)
Value from Attending Programs (Tracking Since 1/2018)	\$ 5,275.00	\$ 126,690.00 (+7%)	\$ 118,485.00 (-6%)	\$ 125,795.00	\$ 0.00	\$ 0.00	\$ 0.00
Value from Fax Service (Tracking Since 1/2018)	\$ 342.00	\$ 4,056.00 (-60%)	\$ 10,205.00 (+6%)	\$ 9,668.00	\$ 0.00	\$ 0.00	\$ 0.00
Value from Employment Prints (Tracking Since 1/2018)	\$ 6.00	\$ 162.75 (-61%)	\$ 419.40 (-23%)	\$ 544.65	\$ 0.00	\$ 0.00	\$ 0.00
Value from Notary Services (Tracking Since 1/2018)	\$ 0.00	\$ 225.00 (-53%)	\$ 475.00 (+44%)	\$ 330.00	\$ 0.00	\$ 0.00	\$ 0.00
Value from Digital Services (Tracking Since 1/2018)	\$ 9,072.00	\$ 138,316.00 (+2%)	\$ 135,824.00 (+7%)	\$ 127,476.00	\$ 0.00	\$ 0.00	\$ 0.00
Value from Using Library Computers (Tracking Since 1/2018)	\$ 0.00	\$ 18,094.74 (-75%)	\$ 72,841.08 (-2%)	\$ 74,104.66	\$ 0.00	\$ 0.00	\$ 0.00
Value from Using Library Wifi (Tracking Since 1/2018)	\$ 1,605.59	\$ 19,942.44 (-40%)	\$ 33,232.50 (+2%)	\$ 32,565.33	\$ 0.00	\$ 0.00	\$ 0.00
TOTAL Value of Free Library Services	\$ 66,380.78	\$ 1,130,466.45 (-47%)	\$ 2,127,036.06 (-6%)	\$ 2,259,391.39 (+6%)	\$ 2,135,671.28 (+0%)	\$ 2,132,387.79 (-2%)	\$ 2,167,140.68 (+0%)

Materials Expenditures

Tracking since 2018

December 2020

	BDL Monthly Total	BDL YTD	BDL Year End (Year-over-Year Change)				
			2019	2018	2017	2016	2015
Amount Spent on Books	\$ 7,343.19	\$ 85,727.68 (+12%)	\$ 76,878.30 (-18%)	\$ 93,763.50	\$ 0.00	\$ 0.00	\$ 0.00
Amount Spent on Periodicals	\$ 2,492.40	\$ 5,390.61 (-5%)	\$ 5,663.99 (-20%)	\$ 7,085.59	\$ 0.00	\$ 0.00	\$ 0.00
Amount Spent on Audiovisual Materials	\$ -1,492.10	\$ 16,992.04 (+13%)	\$ 15,009.96 (-17%)	\$ 17,998.47	\$ 0.00	\$ 0.00	\$ 0.00
Amount Spent on Digital Resources	\$ 1,947.85	\$ 31,708.66 (+12%)	\$ 28,412.62 (-35%)	\$ 43,798.90	\$ 0.00	\$ 0.00	\$ 0.00
TOTAL Spent on All Library Materials	\$ 10,291.34	\$ 139,818.99 (+11%)	\$ 125,964.87 (-23%)	\$ 162,646.46	\$ 0.00	\$ 0.00	\$ 0.00

Other Expenditures

Tracking since 2018

December 2020

	BDL Monthly Total	BDL YTD	BDL Year End (Year-over-Year Change)				
			2019	2018	2017	2016	2015
Total Materials Expenditures	\$ 10,291.34	\$ 139,818.99 (+11%)	\$ 125,964.87 (-23%)	\$ 162,646.46	\$ 0.00	\$ 0.00	\$ 0.00
Total Staff Expenditures	\$ 80,234.07	\$ 956,326.38 (-18%)	\$ 1,172,756.92 (-20%)	\$ 1,469,560.33	\$ 0.00	\$ 0.00	\$ 0.00
Expenditures in other categories	\$ 122,751.90	\$ 483,894.79 (+37%)	\$ 353,231.25 (-16%)	\$ 422,747.74	\$ 0.00	\$ 0.00	\$ 0.00
TOTAL Expenditures in all Categories	\$ 213,277.31	\$ 1,819,492.24 (+1%)	\$ 1,797,240.67 (-13%)	\$ 2,054,954.53	\$ 0.00	\$ 0.00	\$ 0.00

Staffing

December 2020

	BDL Monthly Total	BDL YTD	BDL Year End (Year-over-Year Change)				
			2019	2018	2017	2016	2015
Total BDL Staff	36	36 (avg) (-3%)	37 (avg) (-8%)	40 (avg) (+5%)	37 (avg) (+9%)	34 (avg) (+17%)	29 (avg) (-3%)
BDL Staff with MLS Degree	5	5 (avg) (+25%)	5 (avg) (-33%)	6 (avg) (+20%)	5 (avg) (+150%)	3 (avg)	2 (avg)
Worked Full-Time Equivalents	19.96	24.53 (avg) (-4%)	25.78 (avg) (-4%)	26.92 (avg) (+8%)	24.91 (avg) (+41%)	17.90 (avg) (+13%)	15.75 (avg) (-6%)
Hours of Specialized Training for Staff (Tracking Since 1/2019)	42	1,170 (+119%)	534	0	0	0	0
Hours Volunteers Worked at the Library (Tracking Since 1/2019)	0	39 (-96%)	1,065	0	0	0	0

Outreach Services

Began 2018

December 2020

	BDL Monthly Total	BDL YTD	BDL Year End (Year-over-Year Change)				
			2019	2018	2017	2016	2015
Number of Patrons Served by Outreach Services	11	42 (-40%)	70 (-8%)	76 (+2,433%)	3	0	0
Number of Items Delivered to Outreach Patrons	105	242 (+10%)	220 (-64%)	606 (+2,231%)	26	0	0

Coldwater Branch Heritage Room

Stats part of Coldwater Branch totals above; shown here for convenience.

December 2020

	Heritage Room	BDL YTD	BDL Year End (Year-over-Year Change)				
			2019	2018	2017	2016	2015
Heritage Room Attendance	0	105 (-78%)	484 (-34%)	736 (+12%)	658 (-7%)	705 (+51%)	468 (+50%)
In-Person Reference Questions	0	80 (-81%)	412 (-42%)	708 (+29%)	550 (+664%)	72 (+140%)	30 (-27%)
Reference Telephone Calls	0	60 (-74%)	232 (-16%)	277 (-36%)	433 (+15%)	376 (+83%)	206 (+145%)
Online Reference Questions	0	34 (-48%)	65 (+8%)	60 (-5%)	63 (-24%)	83 (+8%)	77 (+79%)

Coldwater Branch Kids' Place

Stats part of Coldwater Branch totals above; shown here for convenience.
Tracking separately since April 2019.

December 2020

	Kids' Place	BDL YTD	BDL Year End (Year-over-Year Change)				
			2019	2018	2017	2016	2015
Kids' Place Attendance	0	2,385 (-75%)	9,710	0	0	0	0
In-Person Reference Questions	0	226 (-61%)	575	0	0	0	0
Reference Telephone Calls	39	156 (-30%)	224	0	0	0	0
Online Reference Questions	0	0	0	0	0	0	0

Coldwater Branch Teen Space

Stats part of Coldwater Branch totals above; shown here for convenience.
Tracking separately since April 2019.

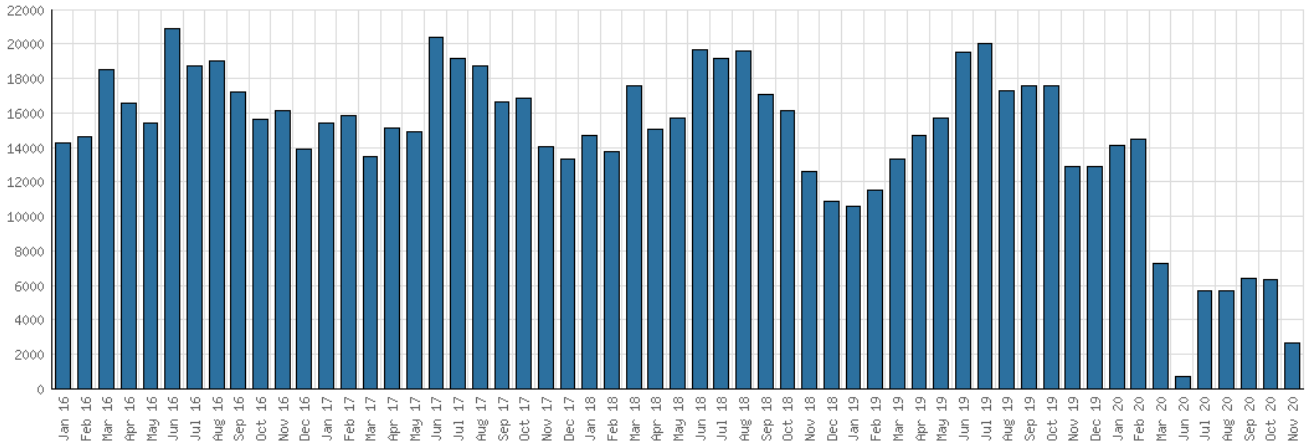
December 2020

	Teen Space	BDL YTD	BDL Year End (Year-over-Year Change)				
			2019	2018	2017	2016	2015
Teen Space Attendance	0	845 (-80%)	4,172	0	0	0	0
In-Person Reference Questions	0	4 (-96%)	93	0	0	0	0
Reference Telephone Calls	0	0	0	0	0	0	0
Online Reference Questions	0	0	0	0	0	0	0

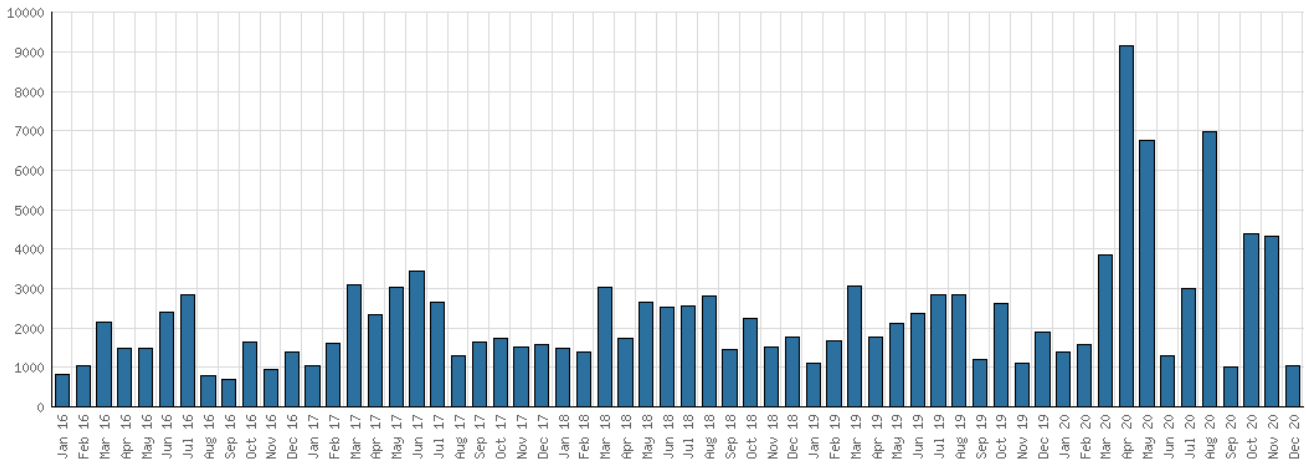
Selected Graphs

5-year Monthly Trends

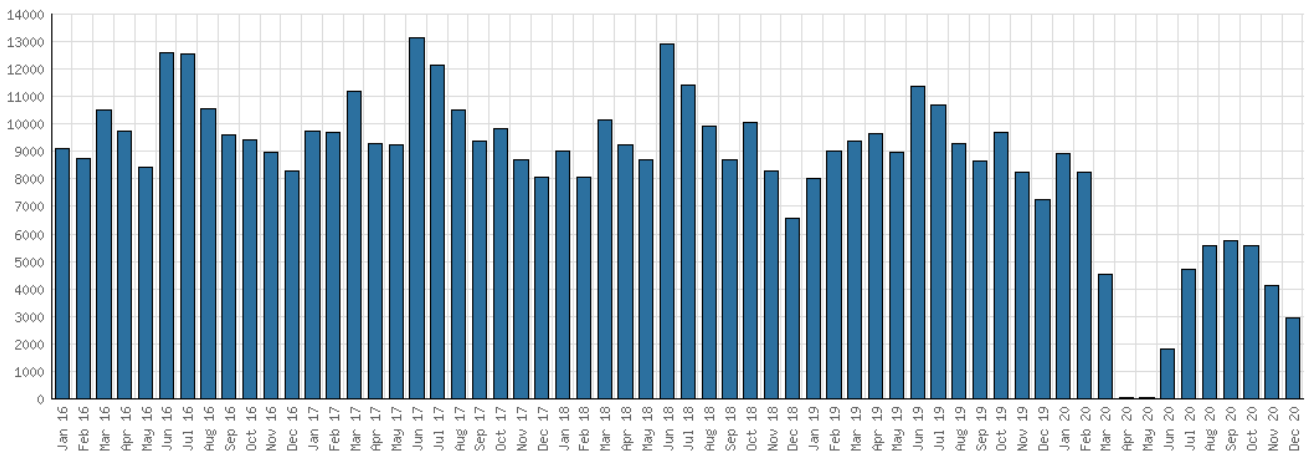
District Attendance



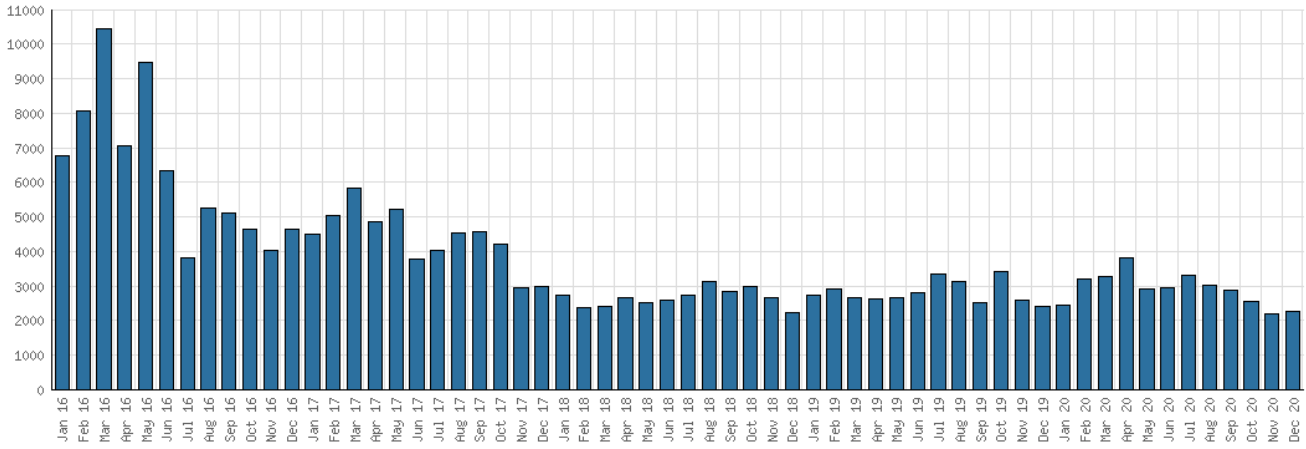
District Program Attendance



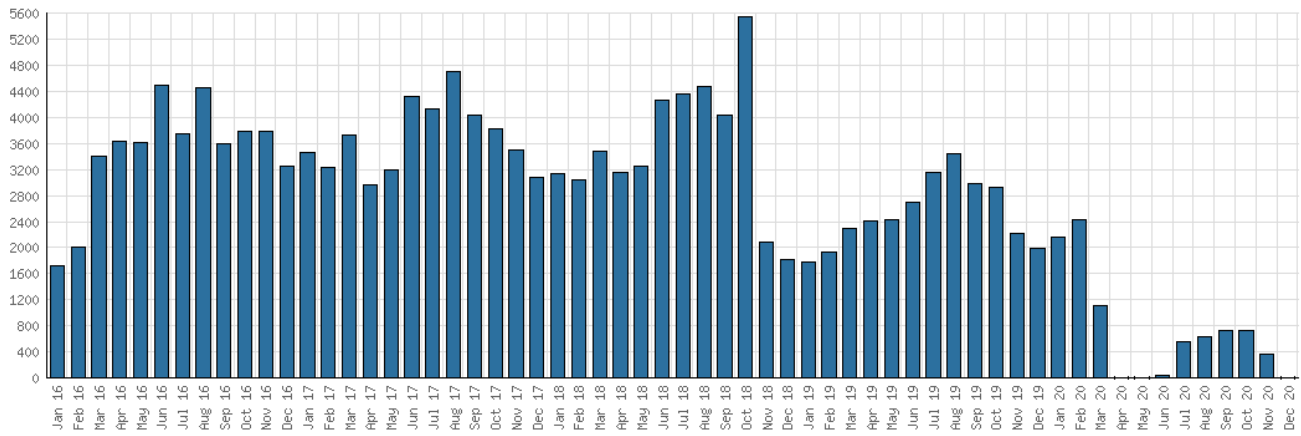
District Physical Checkouts



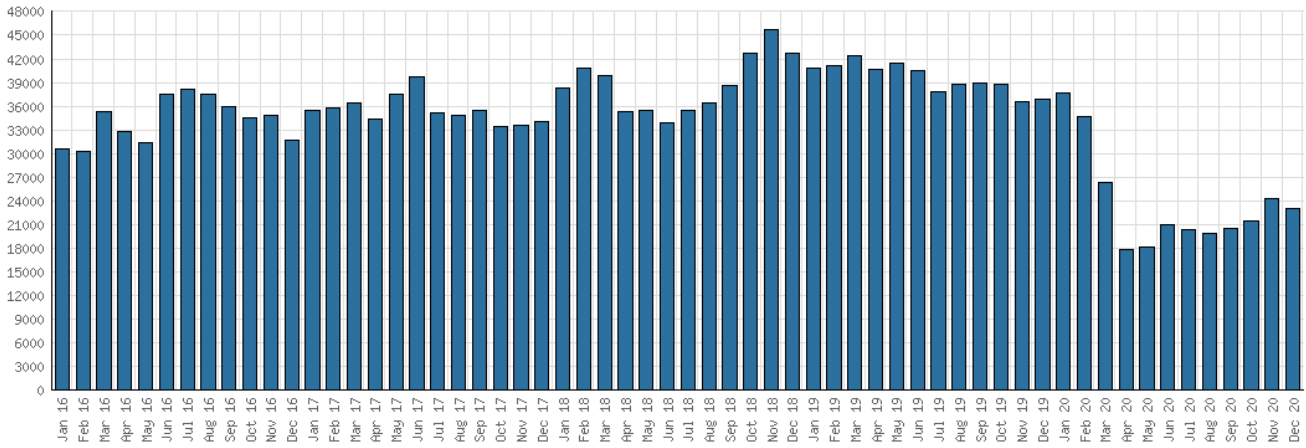
District Digital Usage



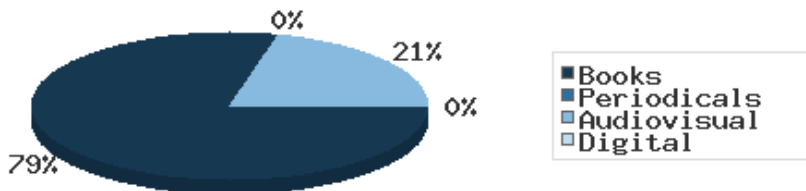
District Use of Library-Provided Computers



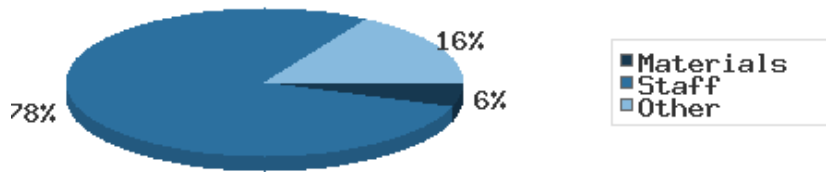
District One-Hour Sessions on Library Wifi



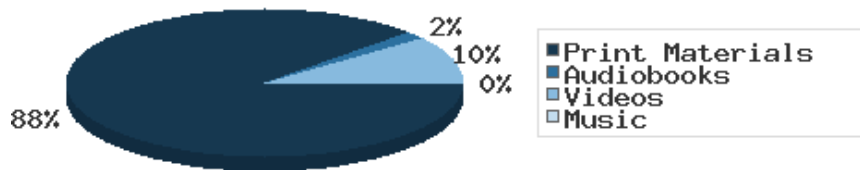
Year-to-Date Materials Expenditures



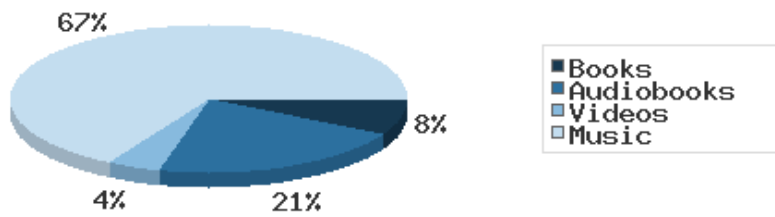
YTD Expenditures in all Categories



Physical Collection



Digital Collection



YTD Usage Breakdown of Digital Services

